

Acidentes ocorridos nas Rodovias Federais em 2005.

## **Rodovia BR 277 – PR**

(Extensão total da Rodovia 732 Km)

Os dados disponíveis se referem somente aos trechos:

- *0 a 84 (Paranaguá - Curitiba)*
- *304 a 732 (a partir do entroncamento com a BR 373)*
- *Isto é, uma extensão total dos segmentos analisados de 514 Km.*

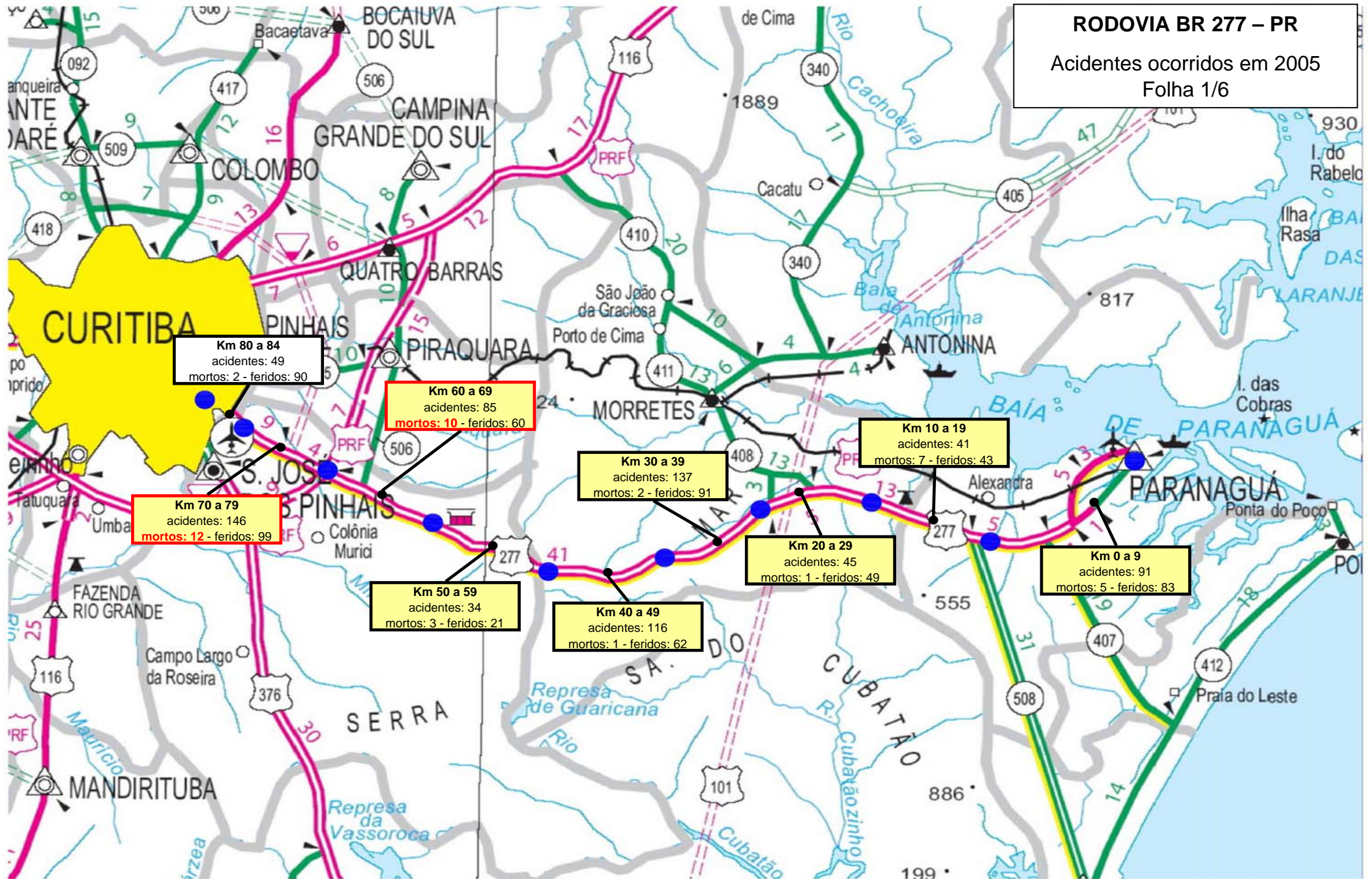
### ***Resumo***

2.722 Acidentes

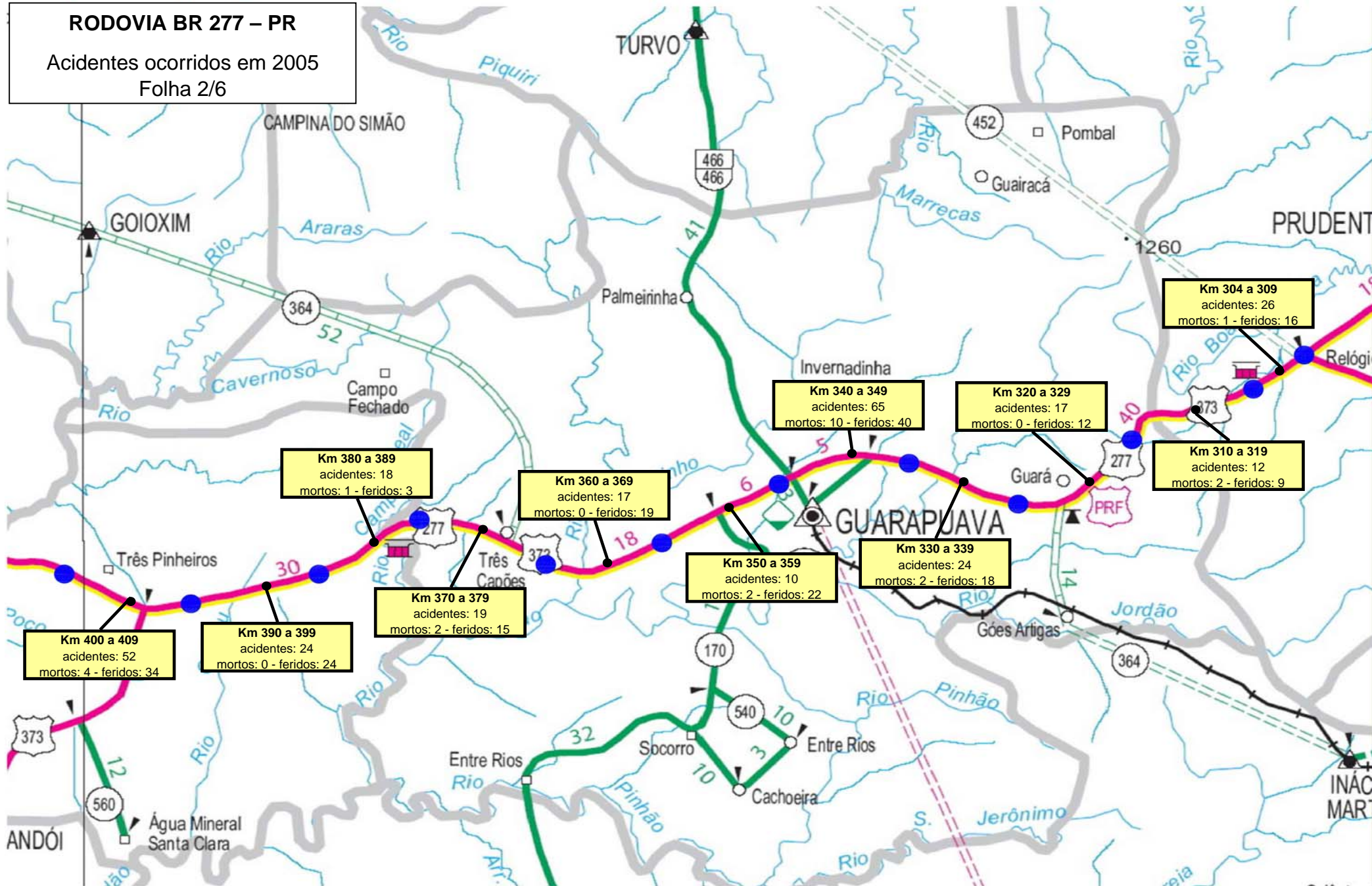
166 Vítimas Fatais

1.984 Feridos

**RODOVIA BR 277 – PR**  
 Acidentes ocorridos em 2005  
 Folha 1/6

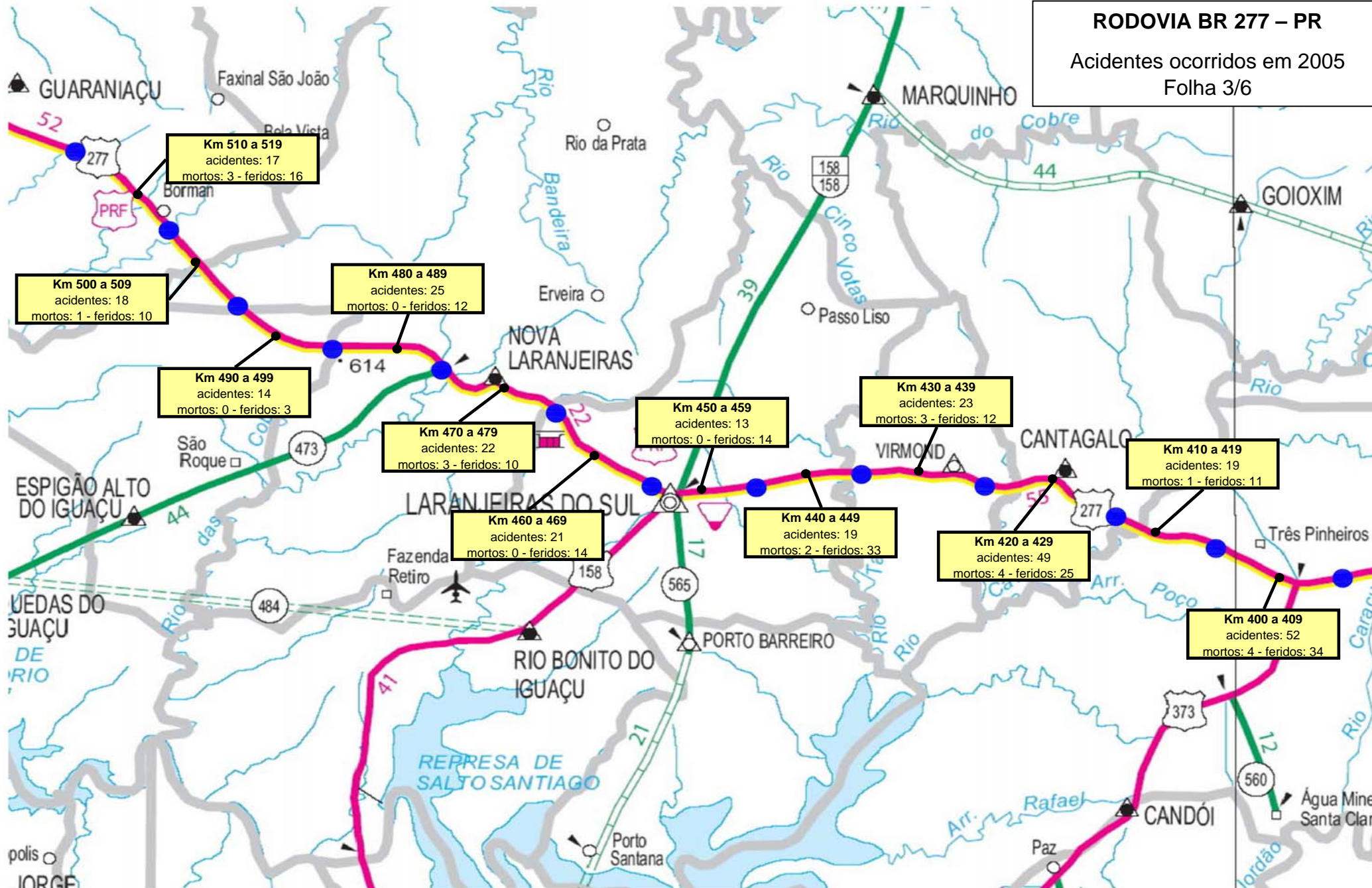


**RODOVIA BR 277 – PR**  
 Acidentes ocorridos em 2005  
 Folha 2/6

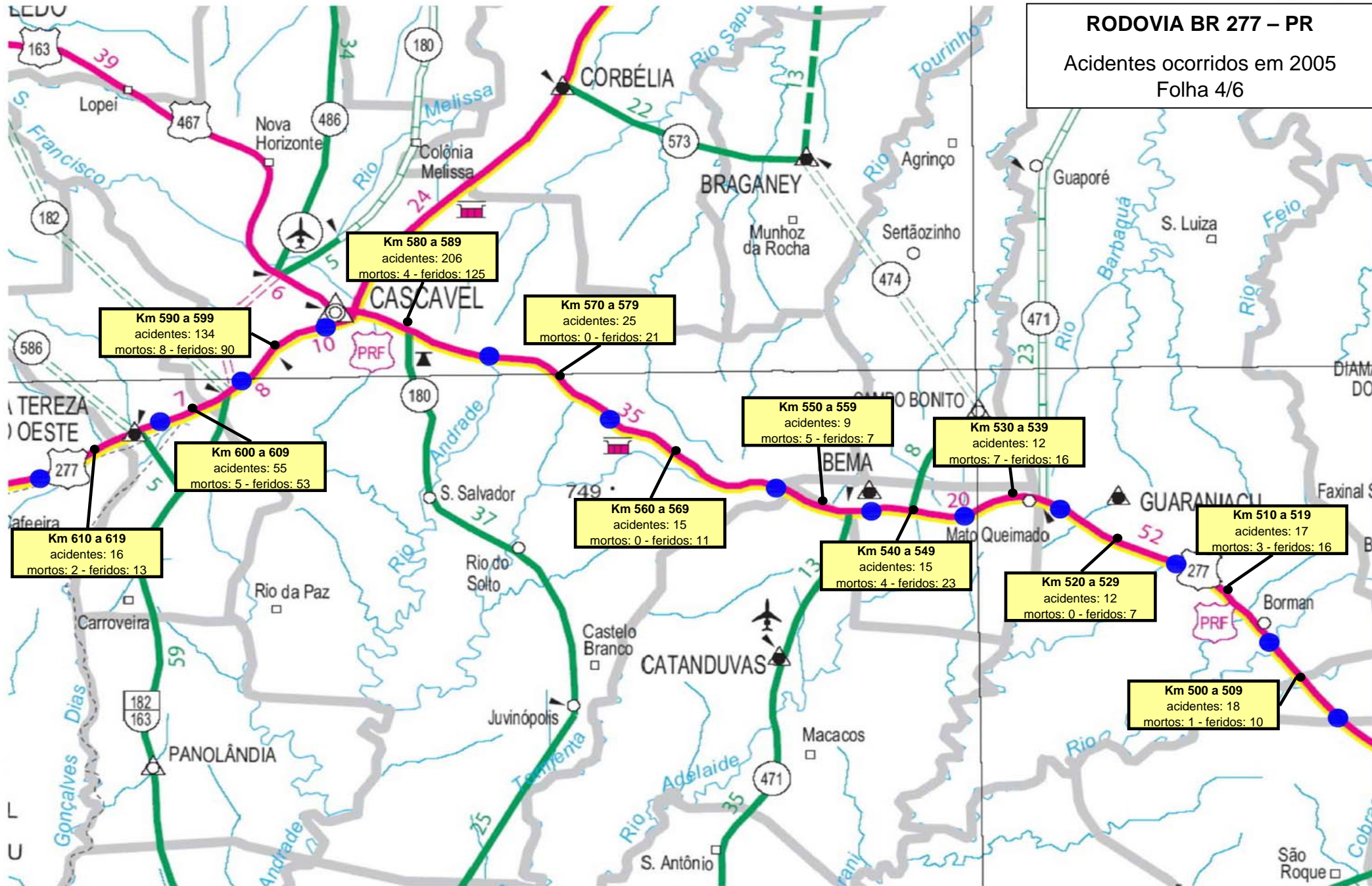


**RODOVIA BR 277 – PR**

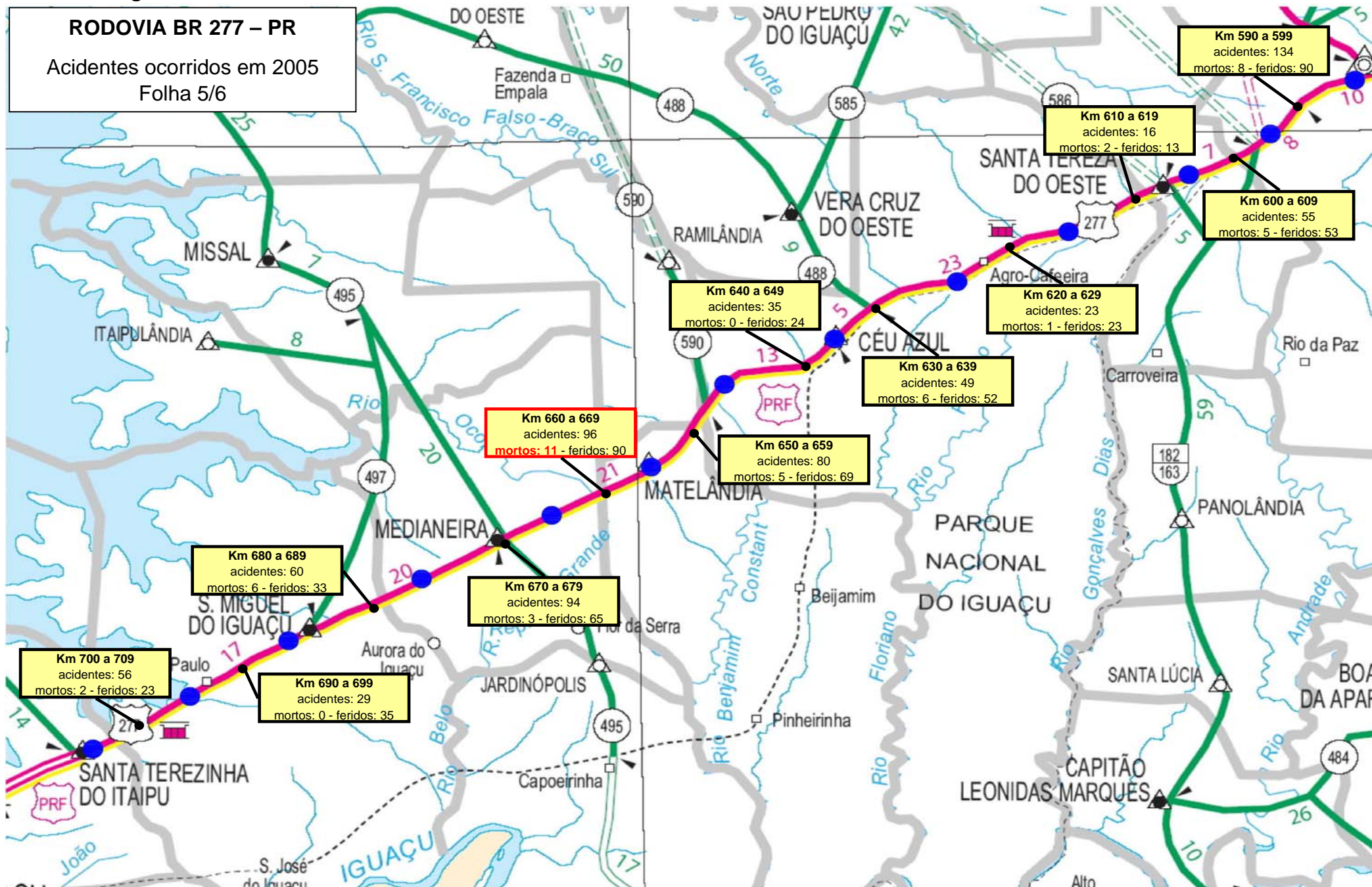
Acidentes ocorridos em 2005  
Folha 3/6



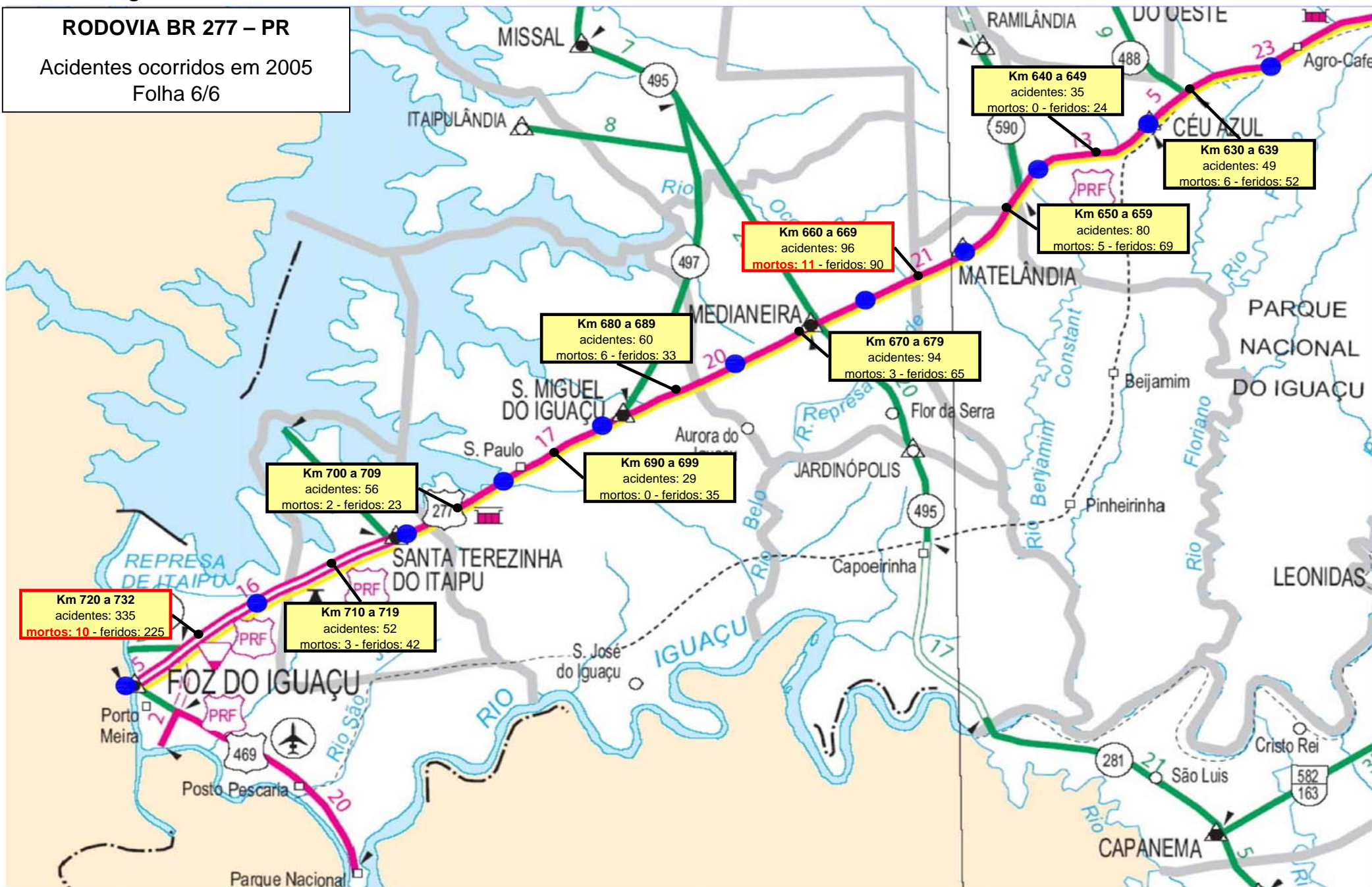
**RODOVIA BR 277 – PR**  
 Acidentes ocorridos em 2005  
 Folha 4/6



**RODOVIA BR 277 – PR**  
Acidentes ocorridos em 2005  
Folha 5/6



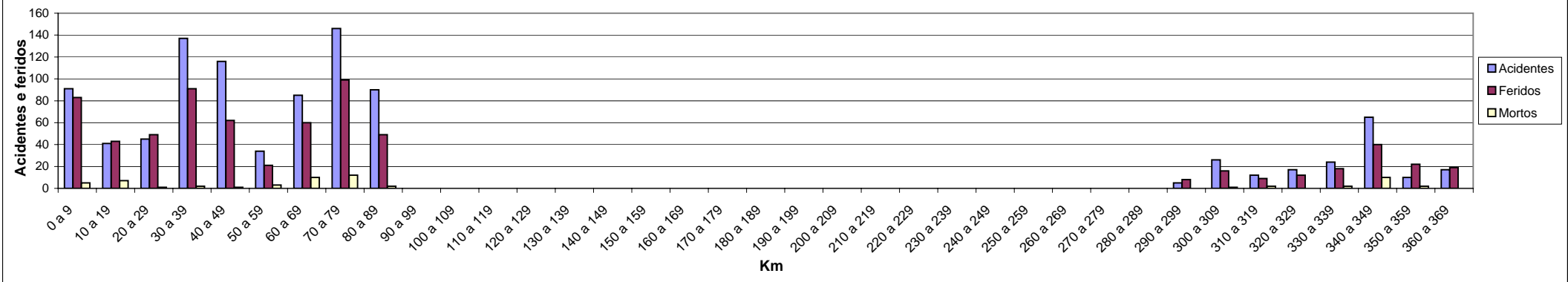
**RODOVIA BR 277 – PR**  
Acidentes ocorridos em 2005  
Folha 6/6



Acidentes ocorridos em 2005.

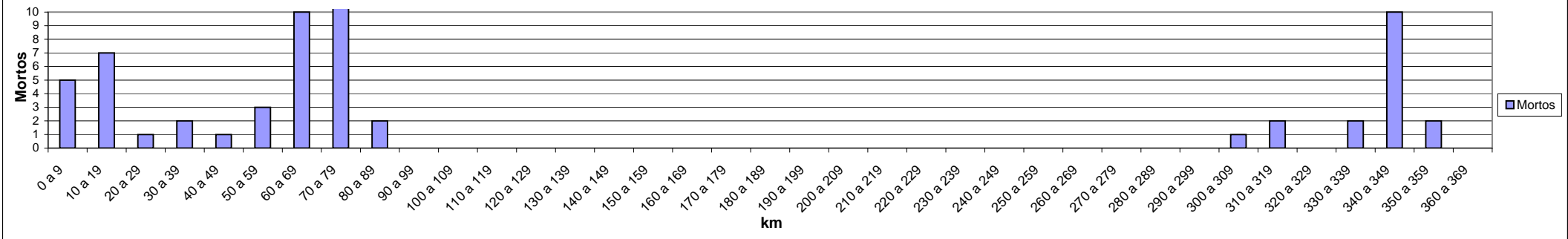
Km	0 a 9	10 a 19	20 a 29	30 a 39	40 a 49	50 a 59	60 a 69	70 a 79	80 a 89	90 a 99	100 a 109	110 a 119	120 a 129	130 a 139	140 a 149	150 a 159	160 a 169	170 a 179	180 a 189	190 a 199	200 a 209	210 a 219	220 a 229	230 a 239	240 a 249	250 a 259	260 a 269	270 a 279	280 a 289	290 a 299	300 a 309	310 a 319	320 a 329	330 a 339	340 a 349	350 a 359	360 a 369		
Acidentes	91	41	45	137	116	34	85	146	90																														
Feridos	83	43	49	91	62	21	60	99	49																														
Mortos	5	7	1	2	1	3	10	12	2																														

Acidentes e feridos em 2005 por trecho de 10 km - (Km 0 ao 369)



Km	0 a 9	10 a 19	20 a 29	30 a 39	40 a 49	50 a 59	60 a 69	70 a 79	80 a 89	90 a 99	100 a 109	110 a 119	120 a 129	130 a 139	140 a 149	150 a 159	160 a 169	170 a 179	180 a 189	190 a 199	200 a 209	210 a 219	220 a 229	230 a 239	240 a 249	250 a 259	260 a 269	270 a 279	280 a 289	290 a 299	300 a 309	310 a 319	320 a 329	330 a 339	340 a 349	350 a 359	360 a 369	
Mortos	5	7	1	2	1	3	10	12	2																													

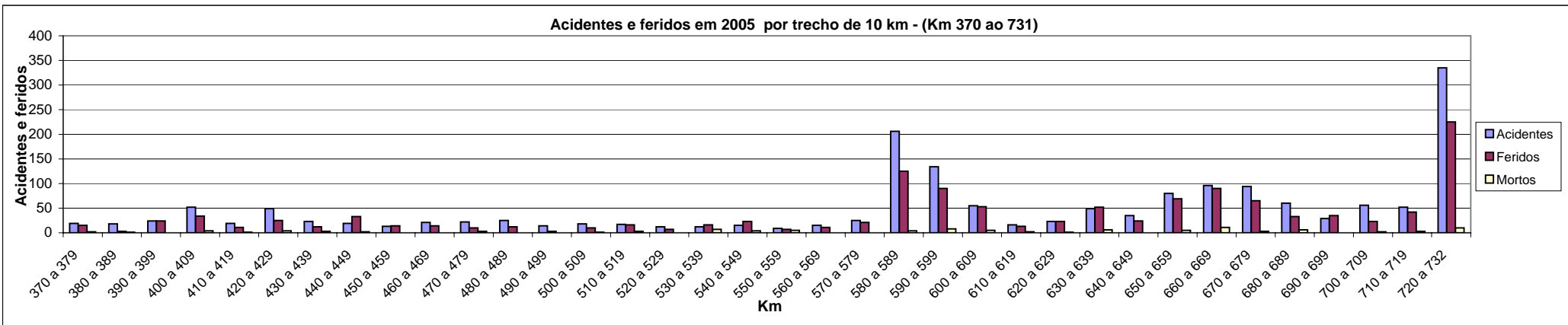
Mortos em 2005 por trecho de 10 km - (Km 0 ao 369)





Acidentes ocorridos em 2005.

Km	370 a 379	380 a 389	390 a 399	400 a 409	410 a 419	420 a 429	430 a 439	440 a 449	450 a 459	460 a 469	470 a 479	480 a 489	490 a 499	500 a 509	510 a 519	520 a 529	530 a 539	540 a 549	550 a 559	560 a 569	570 a 579	580 a 589	590 a 599	600 a 609	610 a 619	620 a 629	630 a 639	640 a 649	650 a 659	660 a 669	670 a 679	680 a 689	690 a 699	700 a 709	710 a 719	720 a 732
Acidentes	19	18	24	52	19	49	23	19	13	21	22	25	14	18	17	12	12	15	9	15	25	206	134	55	16	23	49	35	80	96	94	60	29	56	52	335
Feridos	15	3	24	34	11	25	12	33	14	14	10	12	3	10	16	7	16	23	7	11	21	125	90	53	13	23	52	24	69	90	65	33	35	23	42	225
Mortos	2	1	0	4	1	4	3	2	0	0	3	0	0	1	3	0	7	4	5	0	0	4	8	5	2	1	6	0	5	11	3	6	0	2	3	10



Km	370 a 379	380 a 389	390 a 399	400 a 409	410 a 419	420 a 429	430 a 439	440 a 449	450 a 459	460 a 469	470 a 479	480 a 489	490 a 499	500 a 509	510 a 519	520 a 529	530 a 539	540 a 549	550 a 559	560 a 569	570 a 579	580 a 589	590 a 599	600 a 609	610 a 619	620 a 629	630 a 639	640 a 649	650 a 659	660 a 669	670 a 679	680 a 689	690 a 699	700 a 709	710 a 719	720 a 732
Mortos	2	1	0	4	1	4	3	2	0	0	3	0	0	1	3	0	7	4	5	0	0	4	8	5	2	1	6	0	5	11	3	6	0	2	3	10

